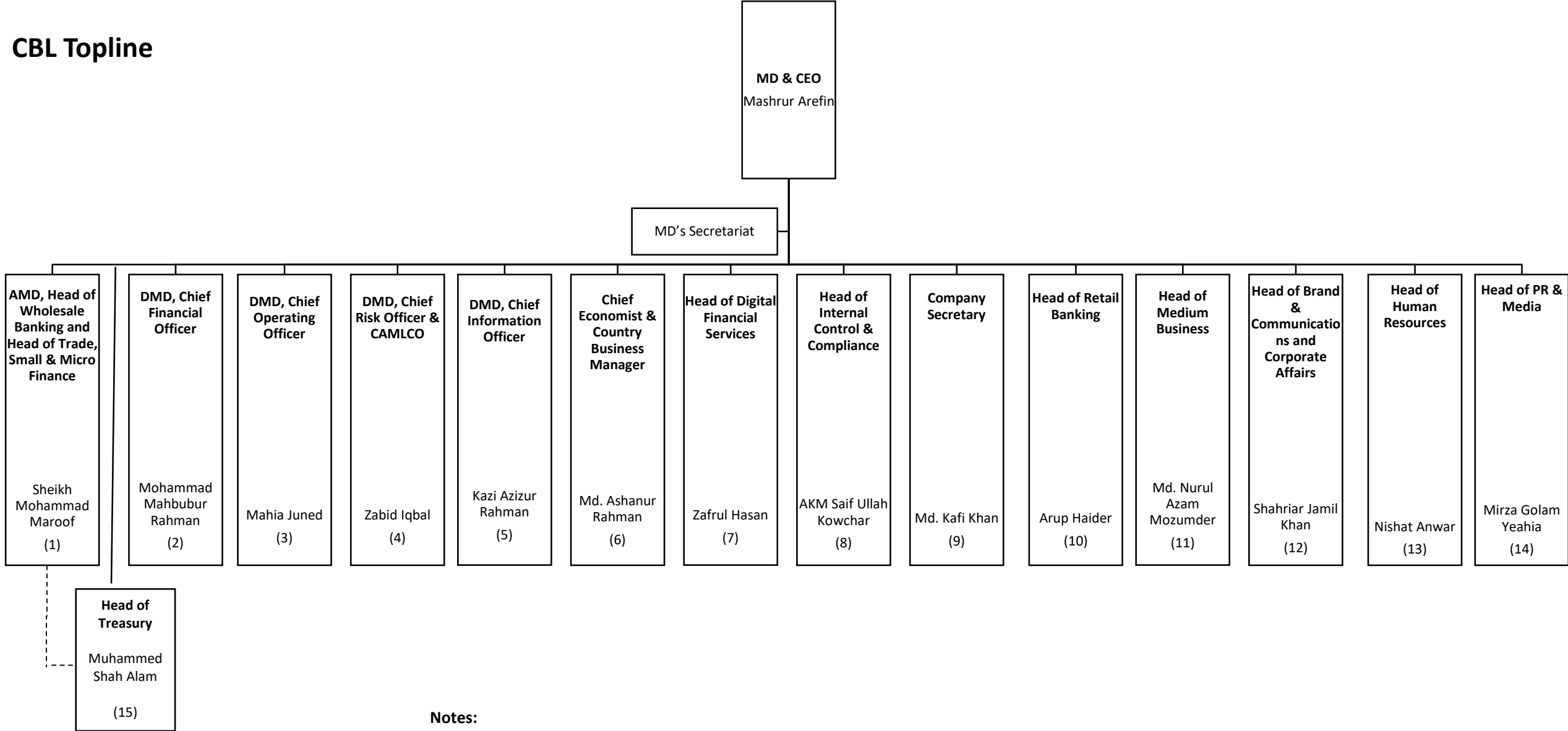


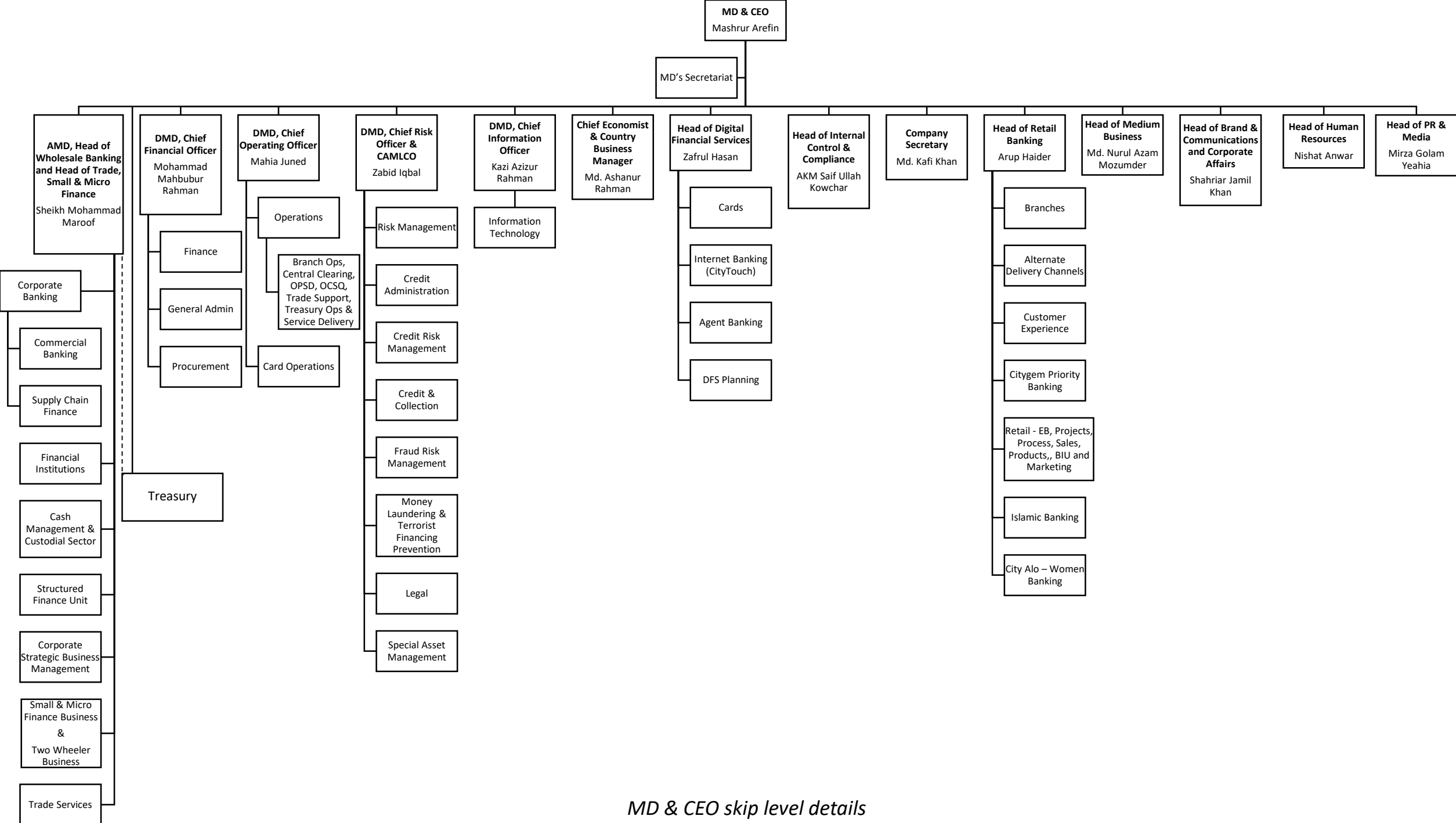
# Annexure - 1

## CBL Topline



**Notes:**

- i. (4) Chief Risk Officer will directly report to Board Risk Management (BRMC) and with a dotted reporting to MD & CEO. He will also perform as Head of Risk Management Division.
- ii. (8) Head of ICCD will directly report to MD & CEO, However Head of Audit although being a part of ICC administratively, shall report directly to Audit Committee to the Board of Directors (ACB)



*MD & CEO skip level details*